

Honorary Patron
Derrick Bowring



WHITE SWAN CLUB NEWSLETTER

1996 Summer Edition

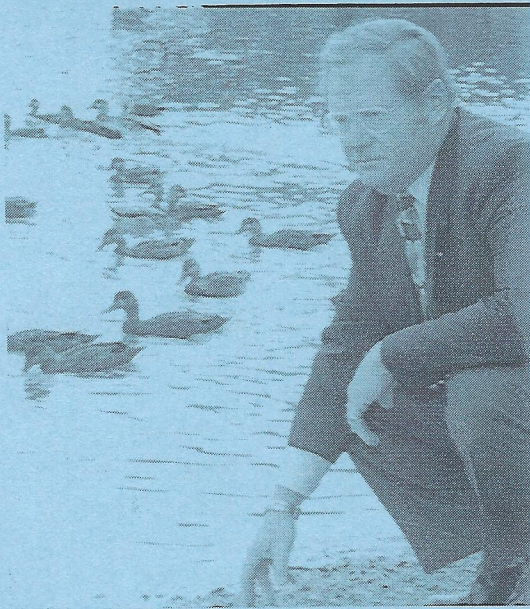


IN THIS ISSUE

Peter Pan Day
Park History Continued

Member Profile
New Members

Current Events
Invitation



Bruce Templeton, founding Chairman of the Bowring Park Foundation, is well suited to this position. He grew up in St. John's and was educated at Prince Of Wales, Memorial University and Concordia University .

His earliest recollection of Bowring Park is going there as a small boy with his parents and feeding peanuts to a monkey named Gus, who lived in the park.

Bruce is married to the former Paula Bowring and they have three children. Christina, who is a doctor at the Janeway, Jim who works with Robinson Blackmore and Sarah, who is studying music at Queens University in Kingston, Ontario. Paula is very active in the Girl Guides, this being her fifth year as Provincial Commissioner.

Due to the nature of his work with Bowring Brothers, the early years of their marriage were filled with extensive travel and many relocations. This resulted in each of their children being born in a different city, namely, Montreal, Toronto and Vancouver. Bruce and his family eventually moved back to Newfoundland where he joined the investment business in 1982.

He is a person who gives generously of himself. His extensive involvement and dedication to the many volunteer

organizations with which he is associated, is ample proof of his civic commitment.

Bruce is a volunteer with the McDonald's Downtown Christmas Parade and for the past fifteen years has been instrumental in making this event a highlight of the Christmas season. He knows the "Old Gentleman" well and feels deeply the emotional contrasts of this important function. In the afternoon Santa is waving and shouting to happy children along the parade route while on Christmas Eve he finds himself at the Janeway Children's Hospital seeing some very sick little elves.

A Boy Scout all his life, Bruce has served the Boy Scouts of Canada in many capacities, including Provincial Commissioner and 1st vice-president of the Provincial Council of Newfoundland and Labrador. He delights in organizing special events, such as arranging for a Water Bomber to give everyone attending a Jamboree a free shower and wakeup call by low flying F-18's.

Bruce is an Elder of St. Andrew's Presbyterian Church, and Chairman of the Board of Management. He feels strongly about "The Kirk" and works hard on its projects.

He is also a member of Rotary International and this organization has recognized his efforts by awarding him the Paul Harris Fellowship for Civic Volunteerism.

Bruce brings to the Bowring Park Foundation the same initiative and foresight as mentioned in his other charities. He was instrumental in obtaining funds from the Royal Bank for the Captain's Falls Bridge, which is now in use by park patrons. He is tireless in his efforts to obtain funding for the various Park projects and under his

Chairmanship, Bowring Park is experiencing a revitalized lease on life.

An example of his determination was evidenced when negotiations were taking place with the Royal Bank for funding for the bridge. The Vice President of the bank wished to see the location. This presented a problem as he suffered from a broken leg and could not walk to the site. Bruce drove him there in his own four wheel drive vehicle, via the riverbank, and the site was visited close up and wet!

The Foundation has been indeed fortunate to have a person of Bruce's caliber as Chairman. This has been recognized by the members who re-elected him for a second term of office at the Annual General meeting.

Bruce sees this challenge as an ongoing process that will never be completely finished. His commitment to this position is to continue to develop the park as the Bowring family wishes and that is as a "Public Garden for quiet family enjoyment". To quote Bruce, "We, as a team (the Directors), make all our decisions based on this premise. We believe it is what Sir Edgar Bowring would have us do. The Directors and committee members work as a very dedicated team, and I think of myself as simply providing guidance."

Bruce has one selfish interest, namely photography. He delights in taking his camera bag and disappearing on his own for a few hours. He especially enjoys photographing Owls at Samonier Nature Park and water fowl at Bowring Park.

Bruce was further honored this year by being chosen St John's **Citizen of the year** for 1995 by the St. John's Jaycees.

BRAVO

On August 3, 1996 the **Green Team** and volunteers from the **White Swan Club** carried out a clean up of the South Brook River in Bowring Park. The area which was cleaned extended from the new bridge over Captain's Falls downstream to the bridge near the tennis courts. It was a hot and humid day but the good turn out and efficient team work made for an enjoyable undertaking. Dozens of bags of trash were collected and removed from the river system. The biscuits, fruit and Pepsi served after the clean up were welcome rewards.

The Conservation Corps is a non-profit organization. As part of the Corps, the **Green Teams** consist of a team leader and three team members who are interested in obtaining training and experience in environmental awareness and enhancement. The **Green Teams** work on various projects and also take part in 5 environmental awareness days whose purpose is to educate and encourage community participation.

The **Green Team** of Bowring Park consists of Valerie Green, team Leader and members Tammy Vaters, Nathan Fuchs and John Robinson.



CURRENT EVENTS

The first Annual General Meeting of Bowring Park Foundation Inc. was held at the Bungalow on June 23, 1996. The meeting was called to order at 7:30PM by Chairman Bruce Templeton. An introduction of the Board of Directors and an update of the Foundation's achievements, goals and objectives was presented by the Chairman.

Committee reports followed. Vice Chairman Lorne Warren outlined the Planning and Priorities of his group, which includes a number of projects. The rebuilding of the Ornamental Pool is a top priority.

John Downton, Chairman of the White Swan Club, presented his report which included a thank you to all volunteer members. The membership, including family members, now totals 363.

The Financial Committee report, which was given by Bruce Templeton, is summarized as follows:

ASSETS	
Current	
Cash	\$57,136
Accounts receivable	240
Prepaid expenses	15,000
Total	<u>\$72,376</u>

LIABILITIES AND EQUITY

Current	
Accounts payable	\$15,744
Deferred revenue	65,000
	<u>80,744</u>

Equity (deficit)

Endowment Fund	1,845
Operating Fund	(10,423)
Project Fund	210
(8,368)	
	<u>\$72,376</u>

Jim Ronan, General Manager of the Foundation, in presenting his report explained to the membership the day to day operation of the business office and the challenging and diversified activities encountered. It was evident from his report that the Bowring Park Foundation executive and membership is a very active, dynamic and progressive group, who will have a

major impact on the beautification and enhancement of the park in the future.

BY-LAWS of the Bowring Park Foundation Inc. which had previously been approved by the Board of Directors were submitted and approved by the general membership.

The election of officers was then carried out as follows:

1 year appointments

Bruce Templeton	Chairman
Lorne Warren	Vice Chairman
Gary Bourne	Sec/Treasurer
Glen Roebathan	Legal Adviser
John Downton	Chairman WSC
Joan Fogarty	Director
Tom Fogarty	Director
Gus Neville	Director

2 year appointments

Evelyn Bennett	Director
Hubert Noseworthy	Director
Charles Horwood	Director
Keith Griffiths	Director

The Chairman then introduced Janet Miller-Pitt, a public relations expert. She gave a detailed and enlightening talk on the concerns and problems we should be aware of in delivering our message to the public regarding the role of the Foundation.

The Chairman then asked the membership to express their concerns and suggestions. The meeting adjourned on a positive note with the consensus being that the Foundation had performed exceedingly well so far and was vital to the Park's future.

NOTICE

The White Swan Club Committee is often in need of volunteers for the various activities carried out throughout the year. If you are interested in becoming a volunteer, please call the office at 576-6134. Give your name, telephone number and type of activity for which you would be interested in volunteering. Your support is greatly appreciated.

PETER PAN DAY AUG. 25, 1996

5

Early in the day it was uncertain, due to inclement weather, if "**Peter Pan Day**" should go on or be canceled. By 10:30 the decision was made to continue on with the day as scheduled. The morning rain made it impossible to have Lawn Bowling demonstrations so unfortunately this had to be canceled. The day finally got started with a splash at 12:15 when the Newfoundland Aquarena Aquatic Club beautifully performed a synchronized swimming display.

As people slowly wandered into the Park, their attention was focused on the Tattoo marching Band. We were very fortunate to have four members from the Tattoo join us for this event. Their march began at the East gate, down to the **Peter Pan Statue** and then onwards up to the Bungalow Lawn. Our **Peter Pan mascot** (P.J. O'Leary) lead the band along their route and as they marched they gathered a following of young and old alike.

Once on the Lawn the entertainment section of the day began with Gerard Hamilton and continued on with performances from groups like the Community Square Dancers, the Jump Its, the Myricks, and Rhonda O'Keefe-Arsenault. As well, on the Bungalow Lawn, our volunteers were offering face painting, a chance to win a prize on a ticket wheel spin, a pizza and Pepsi snack and balloons.

Half way through the entertainment (about 3:00) the rain came pouring down. At the time the Square Dancers were on the stage and they bravely continued on to the end of their segment. It was decided that this was the perfect time for a small intermission. After about fifteen minutes or so the rain stopped. Thankfully, the stage dried off enough so that the Jump Its could continue on with their routine as planned.

While the rain did manage to deter a few people from staying on for the remainder of the day, those that did were glad to catch the Jump Its, the Myricks and Rhonda O'Keefe-Arsenault. The day ended enthusiastically with the singing of "You Are My Sunshine" just as the sun was beginning to burst through the clouds. All of the children on the Lawn were invited up on the stage to sing along and about twenty of them helped bring "**Peter Pan Day**" to a close.

As anyone who has organized events throughout the summer knows, it is often very difficult (due to holidays and other events) to ask people to commit their time and effort on a volunteer basis. On behalf of the White Swan Club a heartfelt thank-you is sent out to all of those who were able to volunteer their time, in whatever way they could, for "**Peter Pan Day.**" Without you, the volunteers, this day would not have happened.

THANKS TO EVERYONE WHO WAS ABLE TO HELP OUT !

Jeanie Myrick
White Swan Club



PARK HISTORY

By Doug Crane

6

Continued

DUCK POND

The body of water known simply as the Duck Pond is almost entirely man made. Originally called the Boat Lake, it was completed in June of 1913, and rental boats were a popular attraction here for many years. Being an artificial body of water, it has to be dredged every few years to remove the silt that is carried down river and deposited. The island located in the middle of the lake was once much larger, and obstructed the view of the opposite side. It has been reduced and remodeled to its current state.

The Duck Pond is also, as its name suggests, home to many water fowl. Most of these beautiful creatures are tame and flightless, but it is no surprise to see some wild ducks paddling about, who land when they see the others.

THE SWANS

Bowring Park has provided a home for these elegant animals for over fifty years, and in the process, the swan has become a symbol for the park and its immense beauty.

On July 1, 1946, six swans were released into the Duck Pond, and their arrival was cause for great excitement. Harry Hamlyn, former park superintendent, had acquired them from the personal collection of King George VI while on a visit to England, the acquisition having been made possible by Mr. Cyril Bowring. However, these six swans, three "cobs" (males) and three "pens" (females), were not the first swans to grace the Boat Lake. A few years beforehand, some were released there, but unfortunately were killed by roving dogs.

Currently, only two swans grace the waters in Bowring Park, one male and one female. Both are around ten years old, but they are not reproducing as was hoped. The difficulty lies in the fact that they share the same gene pool, being either brother and sister, father and daughter, or mother and son. They did produce one "runt" offspring a little while ago, but it was deformed and sickly, and ultimately died.

Up until a few years ago, Bowring Park had a third swan, who unfortunately had to be removed. The reason for this was that the two swans presently residing at the park would constantly harass and even pursue him out of the park waterways. Almost every week park officials would receive notice that this third swan had been chased down the Waterford River. On one occasion, he had

actually traveled down river to the area of the Water Street - Leslie Street intersection, where Bowring Park personnel, with help from the Coast Guard, managed to capture him and bring him back. This underscores an important point concerning swans: they are very territorial creatures. As far as our two remaining swans are concerned, they rule Bowring Park's waterways, and all other water fowl had best beware. They have little patience for any creature ignorant or foolish enough to cross their path. In August of this year, one of our swans actually drowned a duckling that didn't know enough to maintain its distance. Also, during their annual rut, the swans will actively pursue other white waterfowl.

Faced with the swans inherent nature, the introduction of other swans at this time is an impossibility. The only way to increase their numbers here would be to remove the current inhabitants, and any number of new swans would have to be released into the water at the same time.

They nonetheless remain very beautiful and alluring attractions at Bowring Park, as any visitor will attest. Over the years, these animals have become fixtures at the park, and should continue to be for many years to come.

HORSE TROUGH

As one travels westward along Bowring Park's northern roadway, one will notice a cast iron horse trough on the left, a remnant of the days before "horseless" carriages took over the streets of our city. At one time, such horse troughs were common features in downtown St. John's, but with the advent of the automobile slowly pushing horse travel aside, these troughs became unnecessary, and all were eventually removed. The one found here is especially significant because it is the last of its kind, originally located on the east end of Duckworth Street near the War Memorial. It is therefore quite fitting that this important link to our past can be found in Bowring Park, where it can be admired by our numerous visitors, young and old alike.

Another interesting feature of this stop are the many cobblestones that adorn the surrounding alcove, which were once a part of Water Street's main thoroughfare. As a matter of fact, such cobblestones can be found all over Bowring Park. The stone steps nearby are from Fort William, and these can be found in other places throughout the park. Our horse trough, beautifully cast and attractively colored, is a very inviting feature, especially to thirsty park patrons on a hot summer's day.

More next time.

AN INVITATION

Starting at 1:30 on Sunday, **October 27** (rain or shine) members are invited to attend the

GRAND RE-OPENING OF THE CONSERVATORY and the OFFICIAL OPENING OF THE NEW CAPTAIN'S FALLS BRIDGE

Prior to these events, a guided walking tour of the Park will start from the Lodge at 12 noon. Following the ceremonies, refreshments will be served and a second guided walking tour will take place. To assist the organizers in preparing for the refreshments, you are asked to call the office after 6 PM at 576-6134 before October 25 to confirm your attendance.



BROWNING HARVEY L^{TD} **Pepsi Cola Bottlers**

**St. John's
Grand Falls - Windsor
Corner Brook**

Bottled & Canned in Newfoundland



**NOTHING ELSE
IS A PEPSI TM**

GENERAL MANAGER'S REPORT

This past summer has been a very busy and productive one indeed. The Captain's Falls Bridge is installed and the pathways to the bridge should be finished by the end of October. Many Park users have bothered to stop by or call to say how pleased they are with the project, even though its still not complete!

The Conservatory is nearing completion and will be officially opened October 13th. Park staff are busy creating what will truly be a tropical paradise right in the heart of St. John's, to be enjoyed by all, even during our harsh winters.

The Foundation had a total of 23 students working on various projects this summer.

Under the supervision of an engineer sponsored by Action 21/Environment Canada, the Conservation Corps completed a riverbank stabilization project on the South Brook River this summer. This project will help preserve the lower river fish habitat

Research for our guided tours and interpretation brochures was done by two MUN students. These projects will be completed by Foundation volunteers and staff over the next few months.

Students from Centrac College, both St. John's and Burin Campus, have been working on fish, bird and tree identification projects. This information will enable us to provide interpretive material to Park users that has not been available to date.

I would like to take this opportunity to thank the following students and to wish them every success in their future studies:

Jean Myrick, Meghan Miller and Mark Kilpatrick (MUN Summer Students) Valerie Green, Tammy Vaters, John Robins, Mat Fuchs (Conservation Corps) Natasha Pynn (Action 21) Rich Ryan, Scott Morgan, Tony Manning, Carl Pretty, Murray Mercer, Craig Sheppard (Centrac College/St. John's Campus) Valerie Lake, Millet King, Greg Trowbridge, Paul Smith, Jeff Reid, Clyde Brewer (Centrac College /Burin Campus)

NEW MEMBERS

Reg & Margaret Gadden

Amphion & Maxwell Pelley

Sylvia Rees

Patricia & Paul Russell

Douglas Squires & Susan Ealton Squires

Hubert, Maureen & Nolan Noseworthy

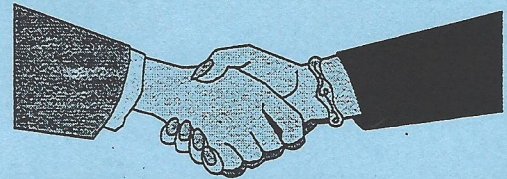
Mabel Counsell

Melvin Duffie

Peter, Gerry, P.J. & Aileen O'Leary

William Barron

Dr. Alzadair & Dorothy Riach



Editor

Associate Editor

Contributors

Ed Matthews

Jim Ronan

Jean Myrick

Gary Bourne

Judy Pinksen

Gus Neville

Valerie Green

Joe Percy

Send your articles or suggestions to
address on cover.

Next Newsletter, December 1996