

Honorary Patron  
Derrick Bowring



# ***WHITE SWAN CLUB NEWSLETTER***

**1999 SPRING and SUMMER**



## **IN THIS ISSUE**

Family Fun and Peter Pan Day  
Punters and Friends Concert  
Current Events

## **COVER PHOTO**

One of the booths at the Punters and  
Friends Concert. John Downton, Evelyn  
Bennett, Sheila Barrett and Debbie Warren.





**Joe Pearcey**, a member of the White Swan Club Committee, was born and grew up in St. John's and received his early education at Centenary Hall School and finished high school at The Adult Education Centre. He learned the trade of Printer at Dicks and Company and during the latter years of World War II served as a Printer on board the Red Cross Passenger Ship, Fort Amherst.

In the 1950's he served with the Civil Defense League and was trained as a fire fighter. Joe retired in the late 1980's after working more than twenty years as Director of Purchasing for St. Clare's Mercy Hospital.

In 1948 he married Madeline Croke and they have four children; Linda, married with two children and living in St. John's; David, married with two children and working as an Engineer at Labrador City; Paul, married with one child living in St. John's and working with NTV; and Derek, married with two children and working as an Engineer at Come By Chance.

There is a saying that if you want a job done ask a busy person and when John Downton, Chair of the White Swan Club asked Joe to join, he must have had this in mind. Joe is President of the Lawn Bowling Club, President of the 5 pin bowling league at Plaza Bowl, an Executive of the Legion, Branch 1, and Director of the Seniors program at Branch 1. If this were not enough to keep him busy he call's Bingo two nights a week at the Legion and three nights a week at the Knights of Columbus.

I asked Joe if he found time for any other activities and he told me one of his favorite hobbies is gardening. One need only look at his front yard to see this is very true. He also finds time to visit his cottage in the country.

Bowring Park has always played an important part in his life, as a boy growing up and in later years with his family. When asked to be a member of the White Swan Club he accepted the challenge with his usual enthusiasm and can now be seen spinning the wheel of chance on Family Fun or Peter Pan Day. He is a strong supporter of the Bowring Park Foundation and a team player all the way.



## CURRENT EVENTS

**The Fourth Annual General Meeting of the Bowring Park Foundation Inc.** was held at the Bungalow on June 13<sup>th</sup>, 1999 at 7.30PM. The meeting was called to order by Manager Jim Ronan who introduced the Chairman Bruce Templeton. Bruce introduced the members of the Board of Directors and then gave a detailed update and explanation of the activities and projects carried out in the past year.

The Art Auction was a major undertaking by Evelyn Bennett and her committee and through their hard work and dedication proved to be an effective fund raising event.

The amphitheater project, chaired by Miller Ewing, is a complicated and time consuming undertaking. However, when completed it will provide a much needed space for the theatre and other groups to perform.

Reports were tabled by:  
 Lorne Warren, Chair of the Planning and Priorities Committee  
 John Downton, Chair of the White Swan Committee  
 Mike Power, Secretary-Treasurer  
 Jim Ronan, Manager Bowring Park Foundation.  
 The Chair of each committee stressed the achievements of the Foundation to date and outlined a very busy schedule for the coming year.

The final business of the evening was an election of the Board of Directors which resulted in one position change.

**Bruce Templeton, Chair**  
 Chair, Ways and Means Committee

**Lorne Warren,**  
 Vice Chair, Chair, Planning and Priorities Committee.

**John Downton, Director,**  
 Chair, White Swan Club.

**Mike Power, Secretary – Treasurer**

**Keith Coombs, Council Representative.**

**Glen Roebathan, Legal Counsel**

**Doug Scott, Director of Communications.**

**Paul Mackey, City Staff Representative.**

**Tom and Joan Fogarty, Directors**

**Evelyn Bennett, Director**

**Miller Ewing, Director**

**Gordon Jin, Director**

**Judy Pinksen, Director (new)**

The meeting adjourned at 9PM.

The Bowring Park Foundation Inc.  
 Statement of Financial Position, December 1998.

Assets	
Operating Fund	
Cash	\$15,855
Accounts receivable	56,620
	<hr/>
	72,475
Project fund	
Term deposit and cash	12,682
Endowment fund	
Term deposits and cash	811,607
	<hr/>
	\$896,764
<hr/>	
Liabilities	
Operating fund	
Accounts payable	\$1,874
Equity (deficit)	
Operating fund	70,601
Project fund	12,682
Endowment fund	811,607
	<hr/>
	894,890
	<hr/>
	\$ 896,764
	<hr/>



## FAMILY FUN DAY

Blessed with an early spring and good weather, Bowring Park was in full bloom for Family Fun Day. This year the activities were held in the West end of the park adjacent to the Garage and this location proved quite adequate for the event. It was a beautiful day and a record turnout made for a very enjoyable day for everyone.

True to its name, Family Fun Day provides activities for all the family. The emphasis of course is fun for the children, with Face Painting, Balloons, Games, free gifts, soft drinks and races. The "Wheel of Chance" is always a great attraction for both young and old.

Tying this all together was a full afternoon of stage entertainment, and this year was no exception. Volunteering their time and talent were the **Grzelak Family Band, the Jump Its, the Carols, and an up and coming band of young people who haven't decided on a name just yet.**

All were crowd pleasers and we thank each and everyone for their effort on behalf of the Bowring Park Foundation.

We would also like to thank the organizers, volunteers, sponsors and of course the families who participated.





### AMPHITHEATRE

Construction began in mid August on the new Amphitheatre, right behind the Fountain Pond. This wonderful facility is being built as the 500<sup>th</sup> Cabot legacy project, much as Cabot Tower was built to celebrate the 400th anniversary of Cabot's discovery. The site contains a covered stage flanked by Grecian columns, playing to a combination of fixed and lawn seating, all surrounded by majestic trees and new landscaping. Backstage there are dressing rooms, a green room, public washrooms, a canteen, a ticket office and storage area. This is a very unique feature to the Park and certainly the province and judging by the interest shown by numerous groups and individuals, even before the project was started, this facility will be a much sought after venue. Thank you again to the funding sponsors; Atlantic Canada Opportunities Agency, St. John's 500<sup>th</sup> Cabot Celebration Committee, Sobeys, Royal Bank, Weston's Bakeries, Dicks & Co. Ltd, Newtel, Petro-Canada and VOCM.

The Amphitheatre was designed by Pratt, Henly Blackwood, a local architect firm. Others involved in the design were Jim Floyd - landscape architect, Artec Consultants - acoustic consultant, Structural Consultants - concrete and steel, and Quadratic Engineering - mechanical and electrical. The contractor building the facility is Mahers Contracting Ltd., with Murray's Horticultural doing the landscaping. The facility will be completed this year for an early 2000 season.. For more information about this new facility, drop by and visit Jim Ronan at the Foundation office or call him at 576-6134

### SOUTH BROOK TRAIL

The Grand Concourse Authority (GCA) has prepared drawings for the upgrading of this 1.5 kilometer trail. When completed, this trail will be a bi-way of the Grand Concourse and will offer a spectacular walk through open meadows and along a heavily wooded ravine as it follow the river. Alive with wildlife, on this trail you might see salmon, brown trout, muskrat, osprey, kingfishers, falcons or one of the many types of song birds. We are working with the GCA and Human Resources Development Canada to fund this project. We are still waiting for a funding announcement.

### THE PUNTERS AND FRIENDS IN THE PARK FAMILY FESTIVAL

For the second year in a row this event delighted thousands. These families and groups came for a full day of quality entertainment, alcohol free (and at a great price too!), to assist the Foundation in its effort to construct a Picnic Pavilion in the Park. The entertainment consisted of **The Punters, Terry Rielly, Timber, Arthur O'Brien and Connemara, The Ennis Sisters, Gearbox, The Dogberries, Damian Follett and Cory Tetford**. Along with the artists, the following major corporate sponsors made this event possible: **Sobeys, Mahers Contracting, Petro Canada, Pepsi, Sunserve Window and Door Centre, Newtel, Kenny's Marble Works Ltd., VOCM / Magic 97, The Telegram, Central Dairies / Tropicana, Dicks and Co. Ltd., TravelQuest and Rock 'n Rodeo.**



### THE PUNTERS AND FRIENDS



## Around the Office

Jim Ronan, General Manager

This past summer was indeed an exceptionally busy one for Bowring Park. With the excellent weather and all of the special events that took place, hundreds of thousands of people were able to come and enjoy this province's gem of parks. Your continued support of the Bowring Park Foundation is needed to ensure that this Park reaches its 100<sup>th</sup> anniversary, in 2014, all the while retaining its immense beauty and rustic character, the very essence of Bowring Park.

We had a full house again this summer at the Lodge. This year we hired three Tour Guides, Nick Janes, Ashley Power and Amanda Whelan, whose duties, as well as the tours, included scanning all of the Cochius family album pictures and pictures from other friends of the Park, developing a brochure for the Conservatory and assisting at special events.

Over the past few years the Foundation has been fortunate to receive a number of photo collections of the Park, all from the late 1800's and the early 1900's. Many thanks to Jim Dempsey and Cormorant Ltd. who supplied the special computer equipment for scanning and is putting all the photographs on CD for us. If you have any photographs that you think we would like to see and possibly copy, please contact the office at 576-6134 to discuss it with us. With the assistance of Park employee Rhonda Thomas, we were able to produce a brochure for the benefit of Conservatory visitors. This publication should be available in the Fall.  
**Thank you Rhonda!**

The number of tours was up this year over last. This year tours were provided to the Recreation Dept. day camps, local daycare centres, seniors organizations, and to the many tour buses that frequented the Park.

Students Nicole Aylward and Mark Carter were hired this summer to work on a number of fund raising initiatives. They completed a detailed research of potential funding organizations and prepared draft proposals for a number of the same. The Punters and Friends in the Park Family Festival required much input by the marketing staff. With such a short time to organize an event of this magnitude, a tireless effort was put in by all to make it the success that it was.

This summer we once again co-sponsored a Newfoundland and Labrador Conservation Corps Green Team to do an environmental project in the Park. This is our third Conservation Corps project. This year our Green Team wrote and performed an environmentally themed play for the children who visit the Park and to groups outside the Park.

Titled "*Think Trees*", through the eyes of little Lilly Lou, the daughter of a giant industrialist, the play teaches young and old the importance of trees in our environment. This year's Green Team members were Jeff Baggs (Team Leader), Stacey Merrigan, Sarah Cahill and Philip Pretty.

The person who kept it all together "around the office" was Rhonda Barbour. Rhonda spent her second year work term with us in the spring and then was hired on as our Administrative Assistant for the summer.

**Good luck to all our summer staff on their return to college, university and high school.**

## CONCESSION OPERATIONS

Red Oak Catering had a very busy summer and are looking forward to the same right on through the fall and winter. The Bungalow, traditionally used for civic functions and weddings, has been discovered by the corporate sector and groups and families who want that something extra that the Park offers, right in the heart of the City.

Red Oak's other operations in the Park, include Peter's Pantry Restaurant in the Bungalow, the pool Canteen and the ice cream vending carts. **Peter's Pantry Restaurant** is a cozy spot that offers a light lunch menu Saturday and Sunday from noon until six. This year Red Oak also operated the food service at the Punters and Friends in the Park concert, and did a fine job I should add. Keep up the great work John and David. You can reach them at 368-6808

The Historic Sites Association Gift Shop was moved to the Bungalow this year. From the motor coach tours that Red Oak is hopeful to begin bringing to the Bungalow for lunch, to the higher profile location, it is hoped that this move will create more business in years to come.

## SHAKESPEARE BY THE SEA FESTIVAL (SBTS)

This year was a special one for the festival. Their main production was *Much Ado about Nothing* at Cape Spear, a new location for the Festival. SBTS did 27 shows in Bowring Park this past summer. They performed a love story called *Lovers: Winners and Oh Grow Up !!*, written, promoted, and created by their new youth theatre company, *The Pan Project*. Made up of teenagers who operate under the guidance of a Festival Mentor, their Peter Pan show was aimed at younger audiences and was free to attend. SBTS is very excited about opening their season next year in the new Amphitheatre.





**ENTERTAINMENT**  
*Unlimited!*

## Thank You! Thank You! Thank You!

*They've done it again! The numerous artists, individuals and businesses listed below have come together in the spirit of cooperation to assist the Bowring Park Foundation in its effort to construct a new 150+ seat Picnic Pavillion in the Park.*

*The Punter's and Friends in the Park Family Festival, held in Bowring Park on August 21, was attended by over 6,000 friends of the Park, who enjoyed an entertainment filled day, with 9 top notch local acts performing for over 8 hours!*

*It is through the kind assistance of all involved that we are able to get closer again to our goal of constructing the new Picnic Pavillion near the Playground.*

**Congratulations to Susan Bonnell** of Topsail, the lucky winner of the "Christmas Comes Early" prize, drawn for at the end of the Festival. This prize, valued at over \$5,000, was won with ticket number 781. Enjoy, Susan!

Did we have fun? **You Bet!** Will we do it again? **You Bet!** We'll see you again next year at

## "The Punters and Friends in the Park Family Festival 2000"!

Once again, much thanks to the following friends of Bowring Park:

The Punters  
Arthur O'Brien & Connemara  
The Dogberries  
Sobeys  
Kenny's Marble Works  
VOCM/Magic 97  
Dicks and Co. Ltd.  
Central Dairies/Tropicana  
Bev Snow  
New World Fitness  
Delta St. John's  
Kelly's Stereo  
Dept. Prov. Tourism  
Atlantic Home Furnishings  
The Village Shopping Centre  
City of St. John's  
Battlefield Equipment  
Community Food Sharing Assoc.  
Beef (Robin DeSilva)  
Beverley Dodge  
Jill Sharpe  
Dave Moyst  
Ed Matthews  
Keith Griffiths  
Jeff Ronan  
Andrew Pike  
Mark Constantine  
Sheila Barrett  
Mike Power  
Gus Neville

Terry Rielly  
The Ennis Sisters  
Cory Tetford  
Maher's Contracting  
Pepsi  
Petro-Canada  
Travelquest  
My Other Office  
Subway  
Fairways Golf  
Hickman Motors  
Ken Power  
The Royal Bank  
Cohens Home Furnishings  
Kittiwake Dance  
Judd Haynes  
The Musicstop  
Waterford Hospital Foundation  
Andrea Mahoney  
Stephen Barrington  
Janine Laite  
Shawn Power  
Paul Lee  
Judy Pinksen  
Robert Warren  
Roy Squib  
Andrew Bartlett  
Doug Scott  
John Downton  
Peter O'Leary

Timber  
Gearbox  
Damian Follett  
The Telegram  
Sunserve Windows & Doors  
Newtel  
Rock n Rodeo  
LSPU Hall  
Cable Atlantic  
MacDonalds  
Red Oak Catering  
Arts and Culture Centre  
Alpine Country Lodge  
St. John's Maple Leafs  
Far East Event Management  
Crosbie Industrial Services  
Rhodie Smith  
Debbie Warren  
Jennifer Stagg  
Phil Pretty  
Doug Elliott  
Tim Bruce  
Sarah Cahill  
Gary Kennedy  
Jeff Hann  
Chris Tobin  
Evelyn Bennett  
Lorne Warren  
Sonia Power  
Jason Clark



## PETER PAN DAY

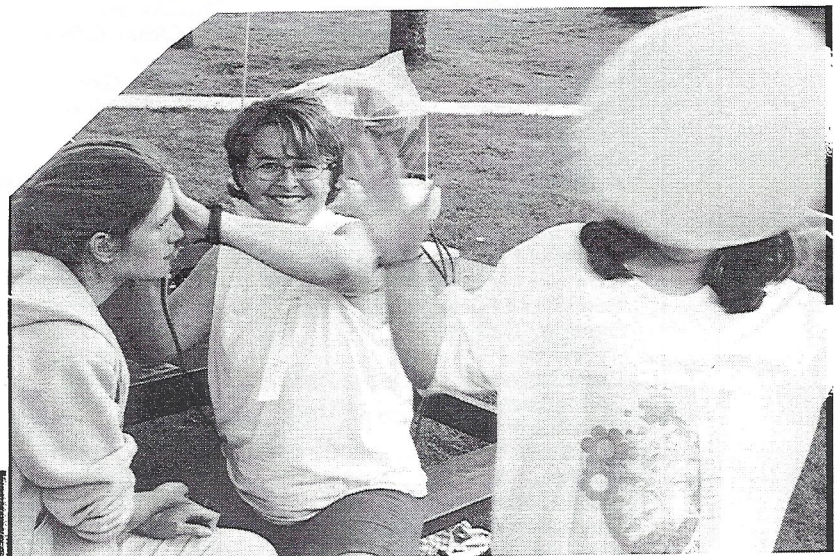
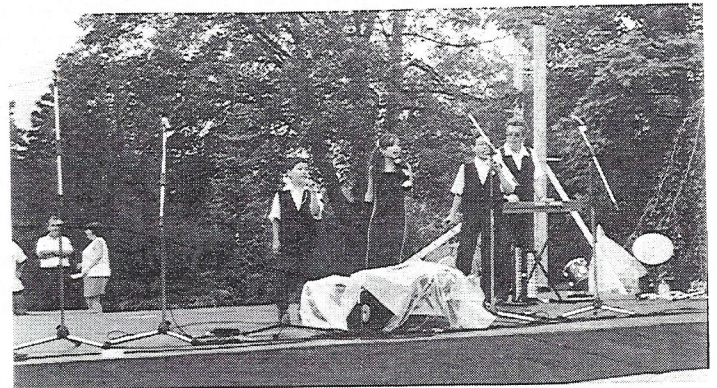
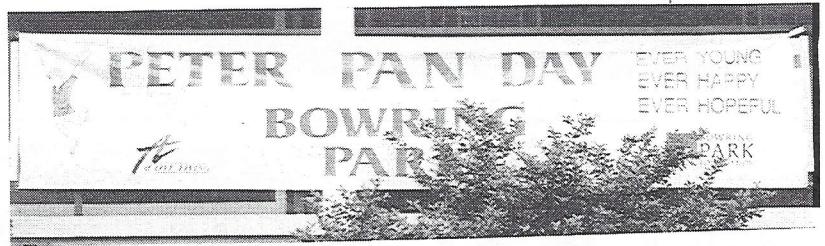
After a summer of near perfect weather, August 15<sup>th</sup> was cloudy and looked as if rain was imminent. The forecast called for rain late in the day so the decision by the Committee was a go.

The proceedings got underway at 1PM and the weather cooperated for the rest of the afternoon.

The main reason for holding Family Fun Day and Peter Pan Day is to give families an opportunity to enjoy activities and stage entertainment at little or no expense. Prizes, drinks, T-Shirts, caps, chocolate bars and other gifts are given free of charge and food and balloons are priced at a minimum.

The entertainment section of the day began with Mr. Twister and continued with the Grzelak Family Band, The Jump Its and the Young People's Band. Throughout the afternoon, the Wheel of Chance was kept spinning and the prizes delighted the lucky winners. The Face Painting and Balloon booths were kept busy and their efforts were clearly visible on the faces of the children.

Overall the day was a huge success. Thanks to the organizational skills of John Dowton, the White Swan Club Chairman and his many volunteers, "Peter Pan Day" will be remembered for years to come by the children who participated. A special thank you to Peggy Baldwin from Gander who demonstrated face painting using air brushes with stencils.



Editor	Ed Matthews
Associate Editor	Jim Ronan
Contributors	Mary Lou Downey Susan O'Driscoll